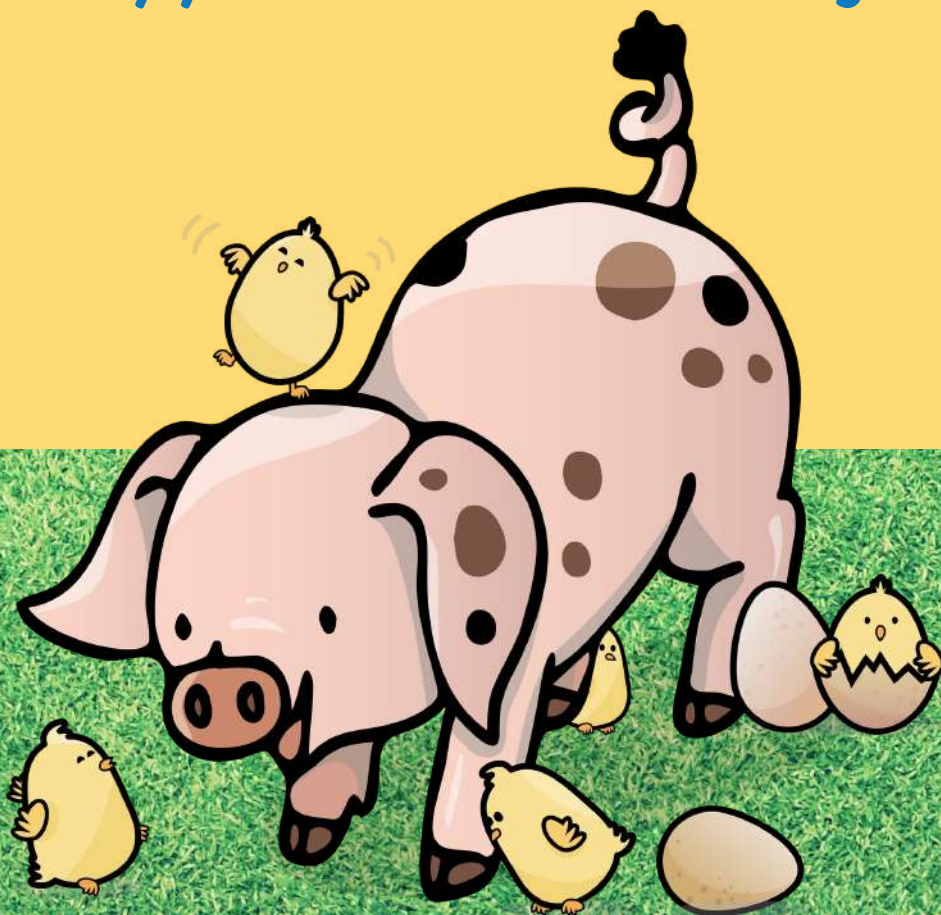


# ANIMALS ON THE FARM

Early years and Foundation stage



# ANIMALS ON THE FARM

## FEET AND FEATHERS

Here at Godstone Farm we have lots of different animals and birds. They each have different types of Feet and feathers and use them for different things

Can you spot these feet and feathers as you walk around the farm?  
Can you discover who they belong to?



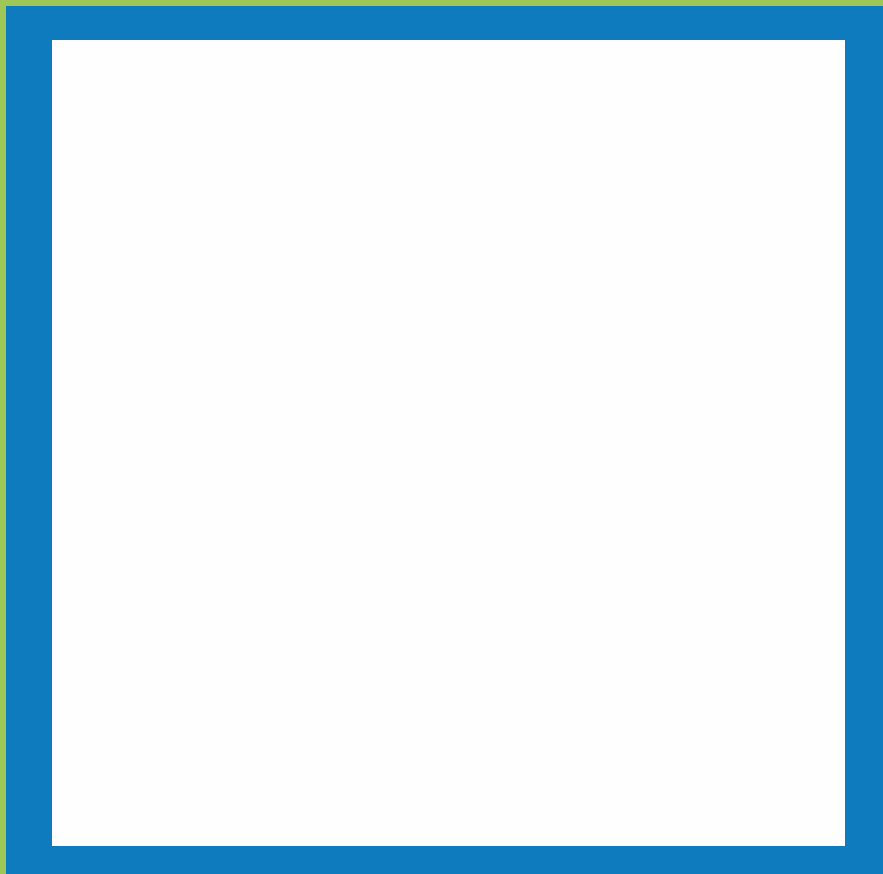


# OUT IN THE FIELDS

As you walk around our farm what can you spot grazing in our fields? Cross off the animals that you spot.



We love our grazing animals. Write or draw which is your favourite animal that you have seen out in the fields today.





# IN THE REPTILE HOUSE

Down in The Reptile House there are lots of different animals  
there are scaley reptiles, noisy amphibians and active arachnids.  
Some have scales, some have amazing eyes, some have sticky feet

Can you find these parts on our creatures?

Tick the box when you find it!





# WHAT DO WE EAT?

Draw lines to match the animal to it's food.





# Cows



Some cows are raised for dairy and some are raised for meat. Females are called cows and Males are called Bulls

What do cows eat?

# Sheep

Sheep are bred for wool, milk and meat. A Female sheep is called a Ewe and a male sheep is called a Ram.



What do Sheep eat?

# MY FAVOURITE FARM ANIMAL

**Use this space to draw a picture of your favourite animal  
that you saw on the farm**

